

Swallowcliffe Annual Parish Meeting

27th March 2025



Agenda

- **Welcome and Introductions – Steve Banas**
- **To receive the minutes of the 2024 Annual Parish Meeting**
- **Wiltshire Councillor Update – Nabil Najjar**
- **Parish Council Updates**
 - Chairman's Report: Overview of PC year – Steve Banas
 - Footpaths and Rights of Way – Mandi Brockway
 - Swallowcliffe Entry for Best Kept Village – Mandi Brockway
 - Greener and Cleaner Swallowcliffe – Lu Boothman
 - Flood Warden Update – Barry Fitzpatrick

Agenda (cont)

- **Reports / Updates from Local Organisations**
 - St Peter's Church - Rex Stephenson
 - Almshouse Trust – Steve Whittingham
- **Village Hall Committee Update – Gerry Blundell**
- **Open Forum**
 - Residents are invited to talk about any matter affecting the village

Meeting Purpose

- Held yearly
 - To report on the activities of the village and Parish Council
 - Obtain feedback from the community
 - All Town and Parish Councils throughout England are required by law to hold an Annual Parish Meeting, which must take place between 1 March and the 1 June (inclusive).

Overview of the PC Year

Steve Banas



Parish Council Team

Name	Role	Focus Area
Stephen Banas	Councillor	PC Chairman, Defibrillator, HR, LHFIG, Emergency Planning
Nick Osborne	Councillor	Village Hall Rep to PC, Finance
Nigel Cooke	Councillor	Village Maintenance, HR
Mandi Brockway	Councillor	Footpaths and Rights of Way, SWW Area Board, Planning
Sarah Taylor	Councillor	Highways
Simon Pritchard	Locum Parish Council Clerk	Administration, Compliance, PC Website

Parish Council Team (cont)

Name	Role	Responsibilities
Lu Boothman	Environmental Initiatives	Greener and Cleaner Swallowcliffe
Barry Fitzpatrick	Flood Warden	Flood Warden, Village Website
Nabil Najjar	Wiltshire County Councillor	Fovant and Chalke Valley Division; Chair SWW Area Board, Southern Area Planning Committee

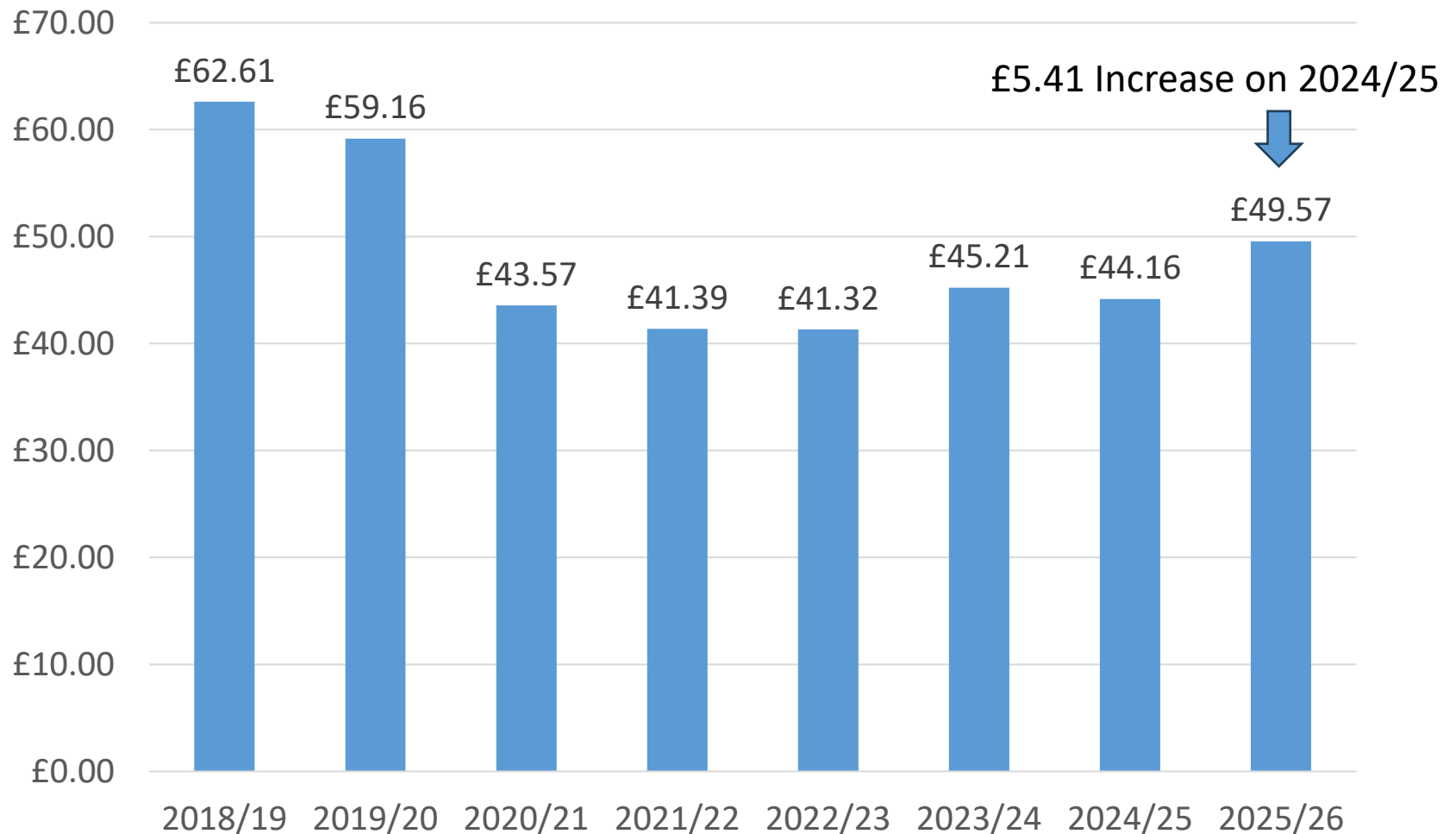
Communications Group

Name	Responsibilities
Stephen Banas	Coordination, PC Liaison (Funding) <i>swallowcliffeparishcouncil.org.uk</i> website
Susie Blundell	"Swallowcliffe" WhatsApp Group, Newcomer Welcome Pack
Claire Bourne	Facebook " <i>Swallowcliffe Community Group</i> "
Judy Fitzpatrick	Swallowcliffe Newsletter Editor
Barry Fitzpatrick	Village Facebook sites, Swallowcliffe Village website: <i>swallowcliffevillage.uk</i>
Caroline Willis	Village Email Group



Resident Council Tax Contribution

Band D



What's been happening

- Emergency Generator Operational and Ready
- Fallen Trees and Branches
- Phone Box Library Operating
- Defibrillator checks
- Newsletter, Welcome Pack, Websites
- Footpaths Improvements
- Speed Indicator Device Operations
- Litter Picks and Flower Planting
- Flood Mitigation
- Planning Applications

Additional Speed Indicator Device (SID) - Purchased



Swallowcliffe Emergency Plan

Swallowcliffe

Community Emergency Plan

Full Version with All Sections, including Action Plan
(For Parish Councillors and Emergency Team)



Volunteers

Assets

Emergency Services

Wiltshire Council

Utility Companies

Vulnerable Individuals

Prevention

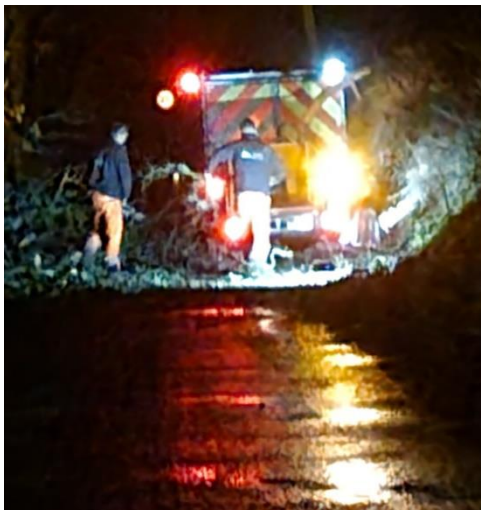
Advice

Emergency Generator and Equipment for Village Hall Ready for Action!



Highways

Recent Emergency Tree Activities





Footpaths and Rights of Way

Mandi Brockway

Best Kept Village Competition

Mandi
Brockway



Greener & Cleaner Swallowcliffe

Lu Boothman

- Litter Pick
- Wildflower /
Daffodil Update
- Plant Swap
- Other -
Increasing
biodiversity in
Swallowcliffe



Flood Warden Update

Barry Fitzpatrick



Your Community Needs You! **Vacancies**

Volunteers

- A few hours a month to assist with various projects
 - SID, Defibrillator, Emergency Facilities, etc

Parish Clerk

- Oversees PC affairs administratively and financially
- Approx 2.5 hours per week on average (132 hours per year)
- Comfortable with Microsoft Word, Email
- Laptop provided
- Remuneration in line with skills, experience and government pay scales

Updates from Village Organizations

- St Peter's Church
- Almshouse Trust
- Others





St Peter's Church Update

Rex Stephenson



Almshouse Trust

Steve Whittingham

Other Updates





Village Hall

Gerry Blundell – Village Hall Committee Chairman

Village Hall Committee

Member	Role
Gerry Blundell	Chair
Nick Osborne	Treasurer
Shirley Banas	Secretary
Caroline Willis	Bookings
Steve Martel	Maintenance
Adrian Clarke	50/50 Club

Open Forum



Residents are invited to talk about
any matter affecting the parish

Thank you for attending!